

An impressionistic painting featuring a church tower with a bell tower in the background, partially obscured by a dense field of colorful flowers in the foreground. The flowers include purple, yellow, and pink blossoms. The sky is painted with broad strokes of blue and white, suggesting a bright, sunny day. The overall style is vibrant and textured, with visible brushstrokes.

# The Royal Societies Summer Show at Patchings

28th June - 17th August 2025

*Hollyhocks at Doddington Hall - Haidee-Jo Summers VPROI RSMA*





*Little Blue Boat by the Monet Bridge, Patchings Lake - Peter Barker RSMA*

# The Royal Societies

## Summer Show at Patchings

Welcome to this opportunity to view this stunning collection of works by 11 of today's best British figurative artists, many of whom I have had the privilege of working with in my previous role as editor of The Artist magazine. Organised by my consultant editor and great friend David Curtis FROI RSMA, in collaboration with my other wonderful friends Chas and Liz Wood and the wider Patchings family, the dream to show the work of artists from a variety of London Royal Societies outside the capital, has been realised.

In this exceptional selection of works in all media, we are invited to celebrate and enjoy the artists' shared love of nature, their interest in the effects of light and weather on the great outdoors and their passion for working en plein air in all seasons. In their inspirational variety of approaches, each in their own unique style encourages us to see familiar subjects in a new way. Their skill in capturing and making apparently ordinary scenes, extraordinary, is for me what painting is all about. Enjoy!

Dr Sally Bulgin

Past owner and editor of The Artist magazine





*Blue Yacht, Early Start* - Mark Buck RSMA

Alistair Butt RSMA

Andrew Farmer ROI

Chris Slater ARSMA

David Curtis FROI RSMA

David Howell PPRSMA

Haidee-Jo Summers VPROI RSMA

Jenny Aitken RSMA

John Lines RSMA

John Scott Martin RBA PRSMA

Mark Buck RSMA

Peter Barker RSMA



**September Colour - Kinder Scout - Oil**



**Changing Seasons Beside the River - Oil**



**High Up in the Derbyshire Dales - Oil**



**Before the Frost Mmelts - Oil**





Passing South Stack Lighthouse, Anglesey - Oil



Unload Crab and Lobster, Cadgwith, Cornwall - Oil



Unloading the Crabs - Wells-next-the-Sea - Oil



Time for an Ice Cream - Sennen Cove - Oil



**A Morning with the Puffins - Oil**



**Sparkling Beck - Gatesgarth, Buttermere - Oil**



**Evening Light and Low Tide at Morston, Norfolk - Oil**



**Evening feeding on the snow drifts - Oil**

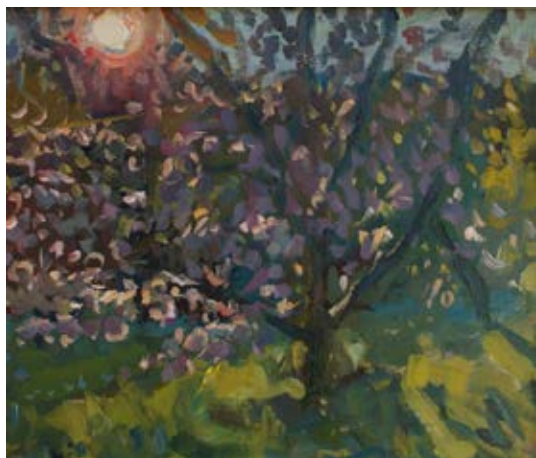




**Winter Stroll** - *Oil on Panel*



**Spring Blossom** - *Oil on Panel*



**Sunset in the Orchard** - *Oil on Panel*



**In the Shade** - *Oil on Panel*



**A Day at Flamborough** - Oil on Panel



**Dusk** - Oil on Panel



**The Race (Scarborough)** - Oil on Panel



**Even Light, Dunstanburgh Castle** - Oil on Panel



**Blue Tit** - *Oil on Panel*



**Robin** - *Oil on Panel*



**Bullfinch** - *Oil on Panel*



**Bullfinch Feeding** - *Oil on Panel*



# Andrew Farmer ROI



**Daff study (I)** - Oil on Panel



**Spring Blossom** - Oil on Panel



**Spring Blooms** - Oil on Panel



**Winter Light on the Pond** - Oil on Panel



**Trafalgar, Twilight** - Oil on Panel



**Artists Studio - Oil**



**Shafts of Light across the Canal Venice - Oil**



**Campanile San Marco Venice - Oil**



Downpour Westgate Street Rotherham - Oil



Evening Giudecca Sunset Venice - Oil





**National Gallery London Rain Reflections - Oil**



**Notre-Dame De Paris - Oil**



Short Back and Sides - Barber Shop Doncaster - Oil



Victoria Quays Water Front Festival - Sheffield - Oil



Westgate Street Rain and Roadworks Rotherham - Oil



**Late Autumn - Clumber Park - Oil**



**Old barns with goats - Aberford - Watercolour**



**Bridge and Stream - Beck Hole - Oil**





**The Market Square - Bruges - Oil**



**An evening stroll - Barcelona - Oil**



**Party on the Green - Misson - Oil**



**Idle Valley Nature Reserve - Oil**



**Dappled Light - Church Street, Misson - Oil**



**Flamborough Cliffs - Watercolour**



**(The Old Saw Mill - Renishaw - Oil**



**Morris Eight & the New Imperial - Oil**



**View from the Mall - London - Watercolour**



**Sun and Shadows - Staithes Harbour - Watercolour**





Moorings in the Outer Harbour - Staithes - Oil



Sheltered Mooring - St Abbs - Oil



**Moonlight on the Hag, Stearsby - Oil**



**San Michele, Venice - Oil**



**Winter Sunset, Santa Maria della Salute, Venice - Oil**



**Mellon Udrigle, Wester Ross** - *Watercolour*



**Tnine Ourika, Marrakech** - *Watercolour*



**Nr. Ourika, Marrakech** - *Oil*



**Bertraghboy Bay, Cashel, Connemara** - *Oil*





**The Leather Souq, Marrakech** - *Watercolour*



**Thunderstorm over Sherrif Hutton** - *Oil*



**Beaters at Stearsby - Time to Pack Up** - *Watercolour*



**Bluebells at Diffryn Gardens - Oil**



**Fixer Upper - Oil**



**Hill Top - Oil**



**Hollyhocks at Doddington Hall - Oil**



Christmas Eve - Oil



The Night We Met - Oil



House at Lansallos - Oil





Studio Windowsill, Night - Oil



Orange Vase - Oil



**The Yellow Bedroom - Oil**



**Tea Cups and Narcissus - Oil**



**Chef - Oil**



**Connemara Sunset** - *Oil on Board*



**On the Edge of the World** - *Oil on Board*



**Morning Snow** - *Oil on Board*





**Staithe Beck** - Oil on Board



**Bullrushes** - Oil on Board



**Finding the Light** - *Oil on Board*



**Winter Sun, Puerto del Carmen** - *Oil on Board*



**Towards the Sun** - *Oil on Board*



**Painting in the Bluebells** - *Oil on Board*



**The Old Forest** - *Oil on Board*





**Busy Day Milford Haven** - *Oil on Canvas*



**Busy Southampton Water** - *Oil on Canvas*



**Liverpool Arrival** - *Oil on Canvas*



**Late for Work** - *Oil on Canvas*



**Yard Work** - *Oil on Canvas*



**Kings Lynn Departure** - *Oil on Canvas*



**Sharpness Morning** - *Oil on Canvas*



**The Corner Gate** - *Oil on Canvas*



**Hawkweed Thistle & Ragwort** - *Oil on Canvas*





**Summer Willow** - *Oil on Canvas*



**Spring Showing Itself** - *Oil on Canvas*



**Shed Makeover** - *Oil on Canvas*



**Oh No More** - *Oil on Canvas*



**Night Shift at Geevor** - *Mixed Media Linocut*



**Below Grass Triptych** - *Mixed Media Linocuts*



**Homeward after the Shift** - *Mixed Media*



**Deep Down Triptych** - *Mixed Media Linocuts*



**Fife Regatta - Rothesay** - *Linocut*



**Following past Felixstowe** - *Mixed Media Linocut*



**Classic Cutters on the Clyde** - *Mixed Media Linocut*

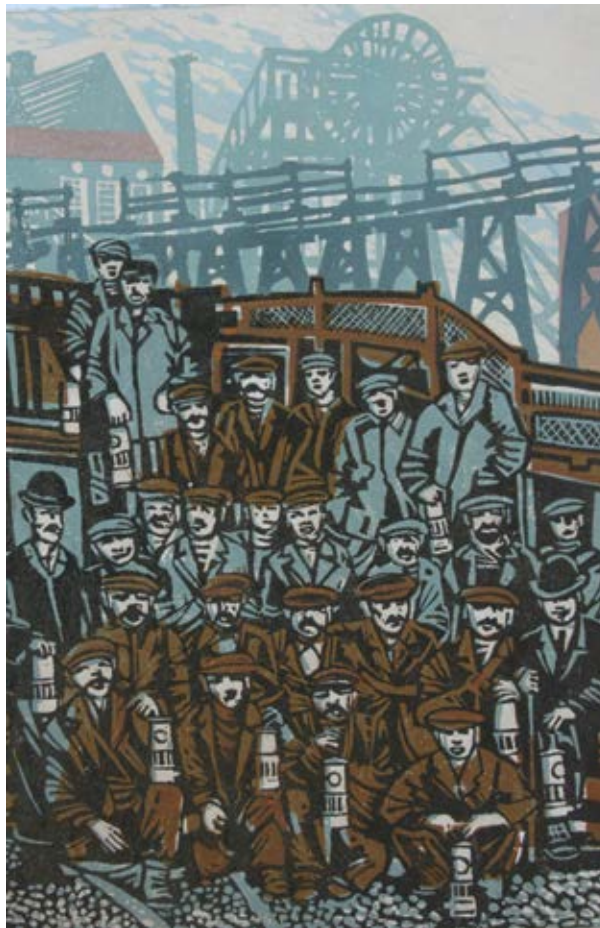




**Pit Village - Eventide** - *Mixed Media*



**It's All for the Bosses Today** - *Mixed Media Linocut*



**Ay up we're ayin us photo took** - *Mixed Media Linocut*



**Treasure at Porthmadog** - *Watercolour*



**Blue Yacht, Early Start** - *Watercolour*



**Going Round the Headland** - *Watercolour*



**Borth Y Gest Morning Light** - *Watercolour*



**Reefed Yacht on a Windy Day** - *Watercolour*



**Porthmadog Misty Morning** - *Watercolour*





**Lillie May on Beer Beach** - *Watercolour*



**Porthmadog Golden Hour** - *Watercolour*



**Returning Home**  
*Watercolour*



**Porthmadog Harbour Wall**  
*Watercolour*



**Bright Day Stonethwaite Beck** - *Pastel*



**Rydal Water** - *Pastel*



**Farmstead near Ullswater** - *Watercolour*



**Autumn, High Wray Forest** - *Oil*





**Towards the Bridge - Oil**



**Birch Pond - Oil**



**Orange Roses - Oil**



**Morning Dew - Oil**





**Lincoln Cathedral - Oil**



**Herdwicks by Thirlmere - Oil**



**The Beech's Last Leaves - Oil**



**Glorious April - Oil**



**Symphony in Blue - Oil**



**Renishaw Hall Garden - Oil**



**Little Blue Boat by the Monet Bridge, Patchings Lake  
Oil**



# ROSEMARY & CO

40 years of *quality handmade* artists' brushes

See why the  
world's leading artists  
use our brushes.  
Handmade in Yorkshire.

**For more information:**

Visit [rosemaryandco.com](http://rosemaryandco.com)

or email [enquiries@rosemaryandco.com](mailto:enquiries@rosemaryandco.com)

Why not join our Facebook group? Search

'The Official Rosemary & Co FB Group'.



Proud to be associated with Patchings



and the ROI.







*Moorings in the outer Harbour- David Curtis FROI RSMA*

**PATCHINGS ART CENTRE . OXTON RD . CALVERTON . NOTTINGHAMSHIRE . NG14 6NU - 0115 9653479**